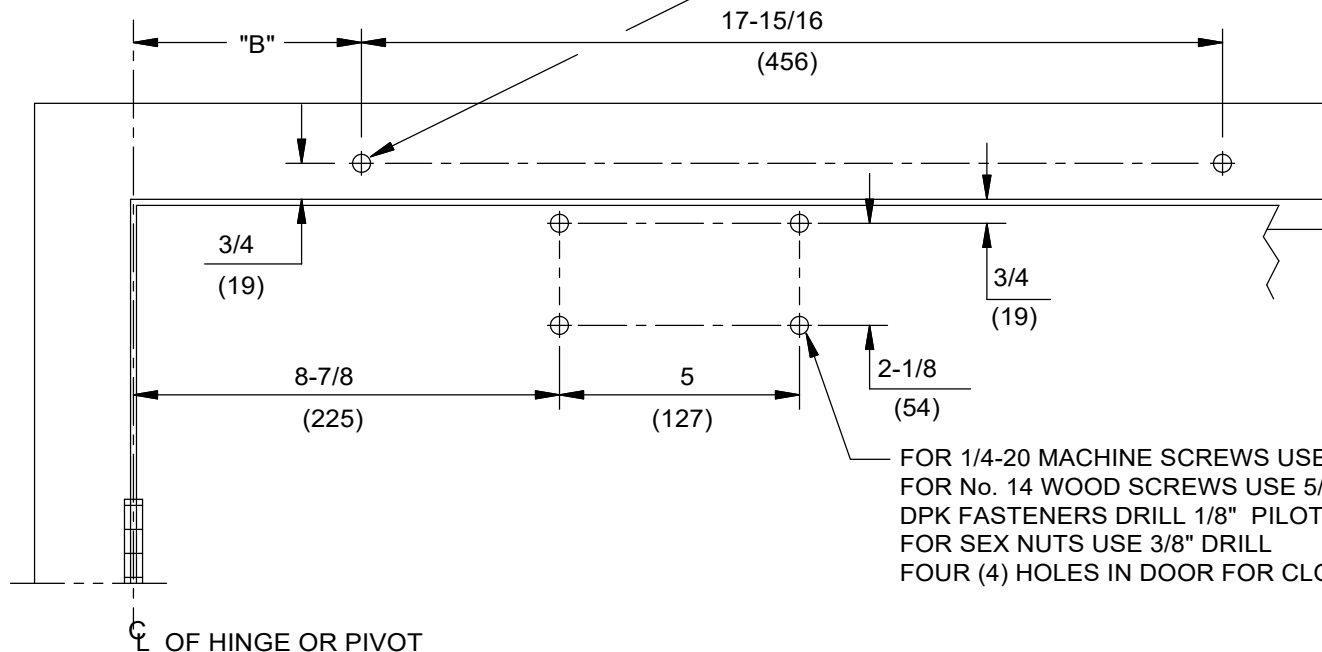


**NOTES:**

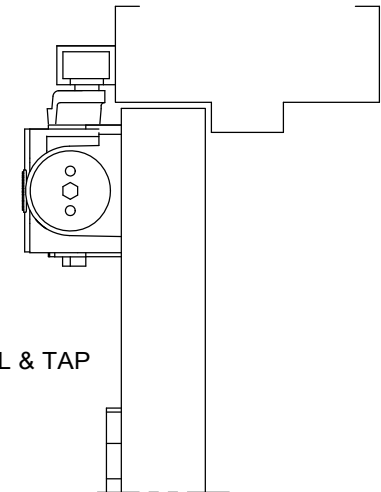
1. DO NOT SCALE DRAWING.
2. RIGHT HAND DOOR SHOWN.
3. DIMENSIONS ARE IN INCHES/(MM).
4. CAUTION: SEX NUTS ARE REQUIRED FOR ATTACHMENT OF COMPONENTS TO UNREINFORCED DOORS AND TO WOOD OR PLASTIC FACED COMPOSITE TYPE FIRE DOORS, UNLESS AN ALTERNATIVE METHOD IS IDENTIFIED IN THE INDIVIDUAL DOOR MANUFACTURER'S LISTINGS.
5. MAXIMUM OPENING 175°. (ALLOW CLEARANCE FOR CLOSER COVER)
6. SEE CATALOG FOR HOLD OPEN RANGE INFORMATION.
7. OPTIONAL DPK FASTENERS (DPK89) FOR STEEL DOOR & FRAME ONLY.

ANGLE OF OPENING	DIM "B" TRACK
85°	$\frac{10-1/2}{(267)}$
90°	$\frac{9-3/4}{(248)}$
110°	$\frac{7-3/4}{(197)}$
175°	$\frac{4-3/4}{(121)}$

FOR 1/4-20 MACHINE SCREWS USE 7/32 DRILL & TAP  
 FOR No. 14 WOOD SCREWS USE 5/32" DRILL  
 DPK FASTENERS DRILL 1/8" PILOT HOLE  
 TWO (2) HOLES IN FRAME FOR TRACK



FOR 1/4-20 MACHINE SCREWS USE 7/32 DRILL & TAP  
 FOR No. 14 WOOD SCREWS USE 5/32" DRILL  
 DPK FASTENERS DRILL 1/8" PILOT HOLE  
 FOR SEX NUTS USE 3/8" DRILL  
 FOUR (4) HOLES IN DOOR FOR CLOSER



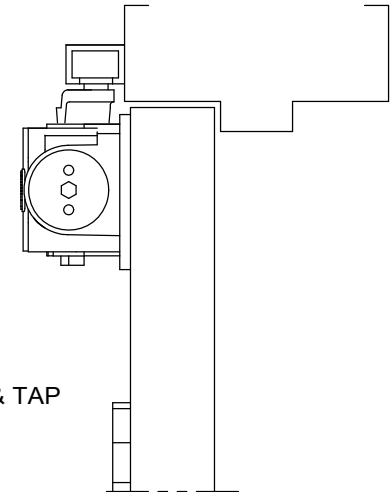
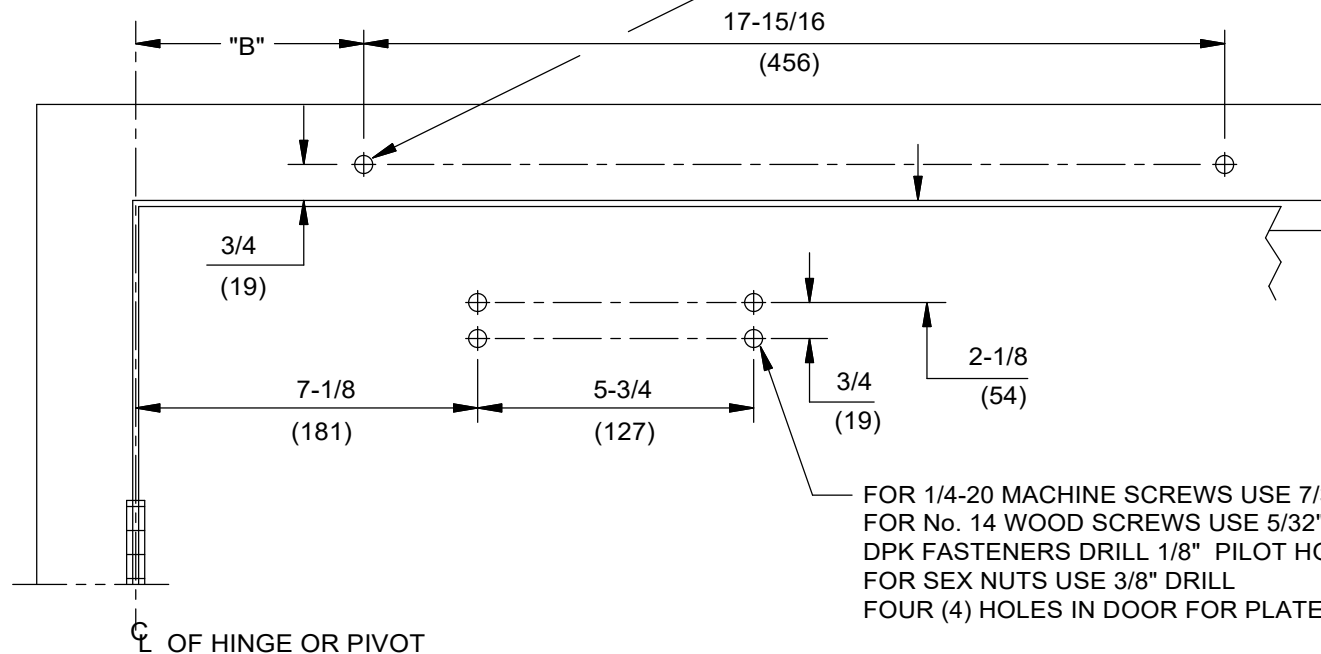
DOOR CLOSER MODELS: 8916, 8956 JT, JTH  
 JAMB TRACK INSTALLATION (PULL SIDE MOUNT)

**NOTES:**

1. DO NOT SCALE DRAWING.
2. RIGHT HAND DOOR SHOWN.
3. DIMENSIONS ARE IN INCHES/(MM).
4. CAUTION: SEX NUTS ARE REQUIRED FOR ATTACHMENT OF COMPONENTS TO UNREINFORCED DOORS AND TO WOOD OR PLASTIC FACED COMPOSITE TYPE FIRE DOORS, UNLESS AN ALTERNATIVE METHOD IS IDENTIFIED IN THE INDIVIDUAL DOOR MANUFACTURER'S LISTINGS.
5. MAXIMUM OPENING 175°. (ALLOW CLEARANCE FOR CLOSER COVER)
6. MOUNT PLATE TO DOOR USING LOWER FOUR MOUNTING HOLES.
7. SEE CATALOG FOR HOLD OPEN RANGE INFORMATION.
8. OPTIONAL DPK FASTENERS (DPK89) FOR STEEL DOOR & FRAME ONLY.

ANGLE OF OPENING	DIM "B" TRACK
85°	10-1/2 (267)
90°	9-3/4 (248)
110°	7-3/4 (197)
175°	4-3/4 (121)

FOR 1/4-20 MACHINE SCREWS USE 7/32 DRILL & TAP  
 FOR No. 14 WOOD SCREWS USE 5/32" DRILL  
 DPK FASTENERS DRILL 1/8" PILOT HOLE  
 TWO (2) HOLES IN FRAME FOR TRACK



DOOR CLOSER MODELS: 8916, 8956 JT, JTH  
 JAMB TRACK INSTALLATION (PULL SIDE MOUNT)  
 WITH PLATE BP89